

FIGURE 40  
MACQUARIE-LAKE CATCHMENT  
1% AEP CC DESIGN EVENT  
PEAK FLOOD LEVEL

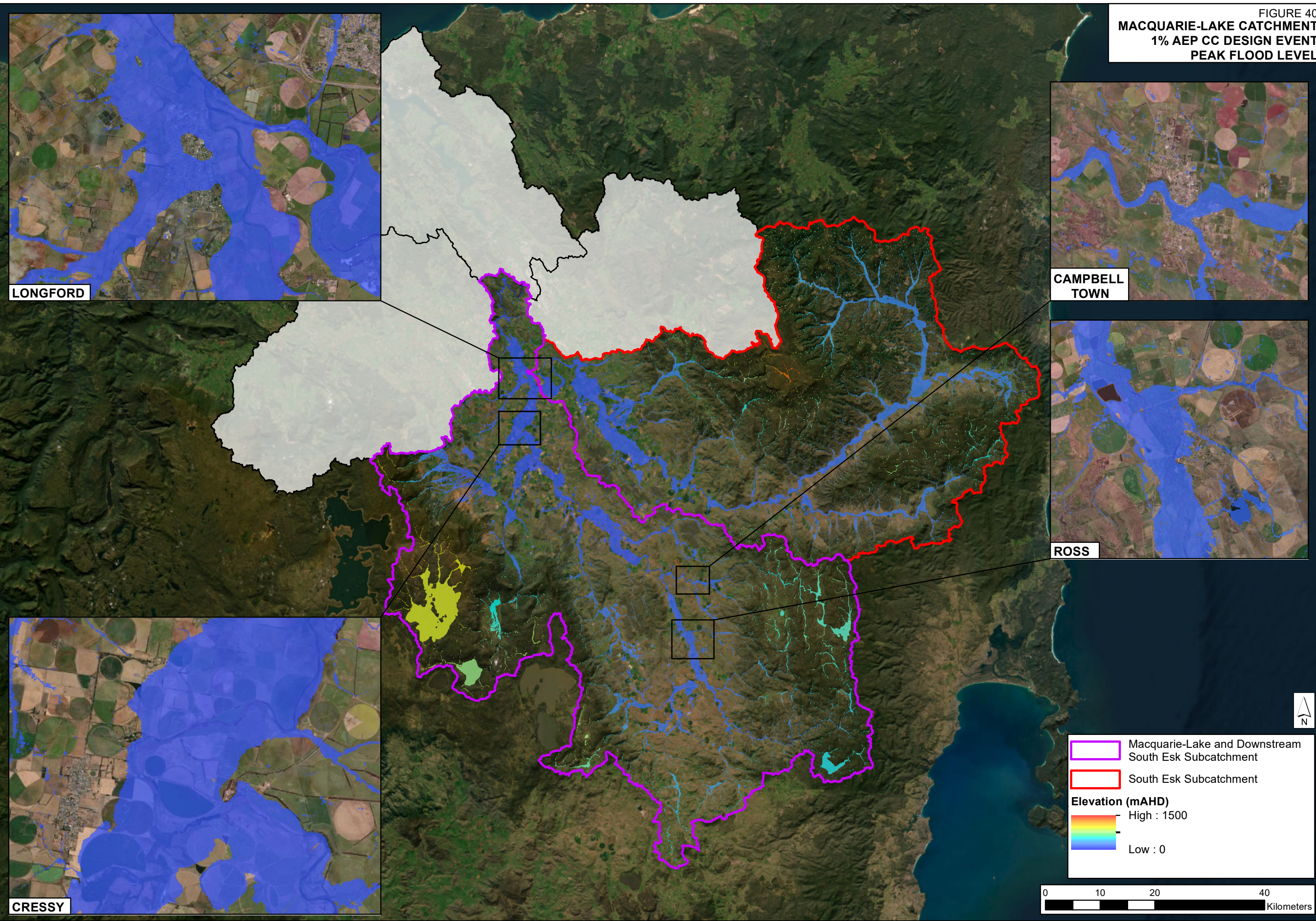




FIGURE 41  
MEANDER CATCHMENT  
1% AEP CC DESIGN EVENT  
PEAK FLOOD LEVEL

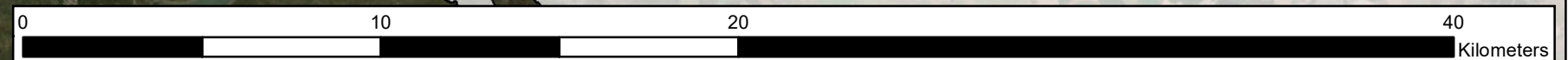
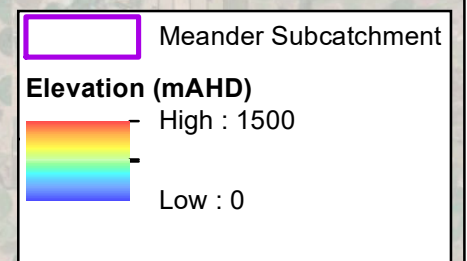
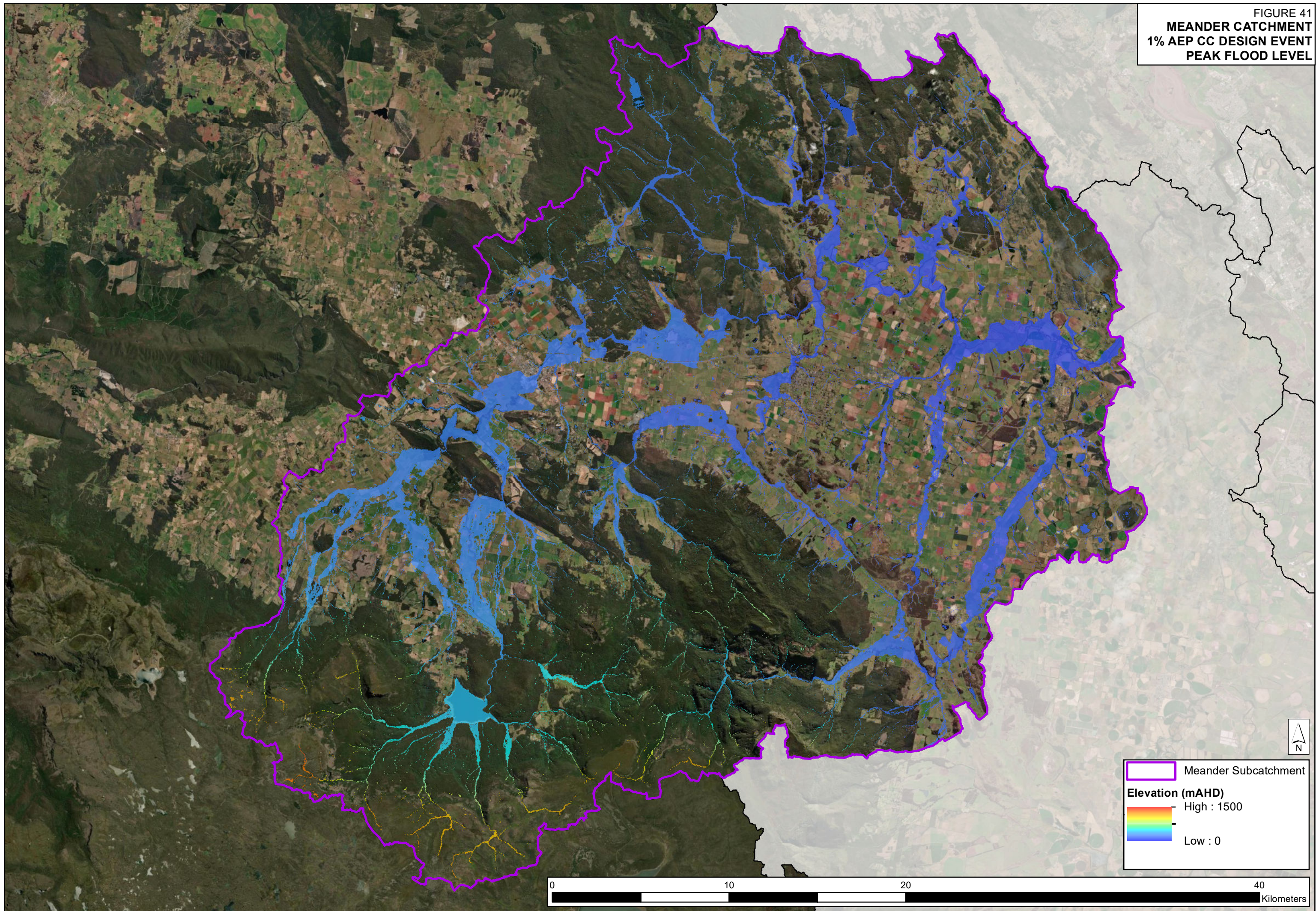




FIGURE 42  
SOUTH ESK CATCHMENT  
1% AEP CC DESIGN EVENT  
PEAK FLOOD LEVEL

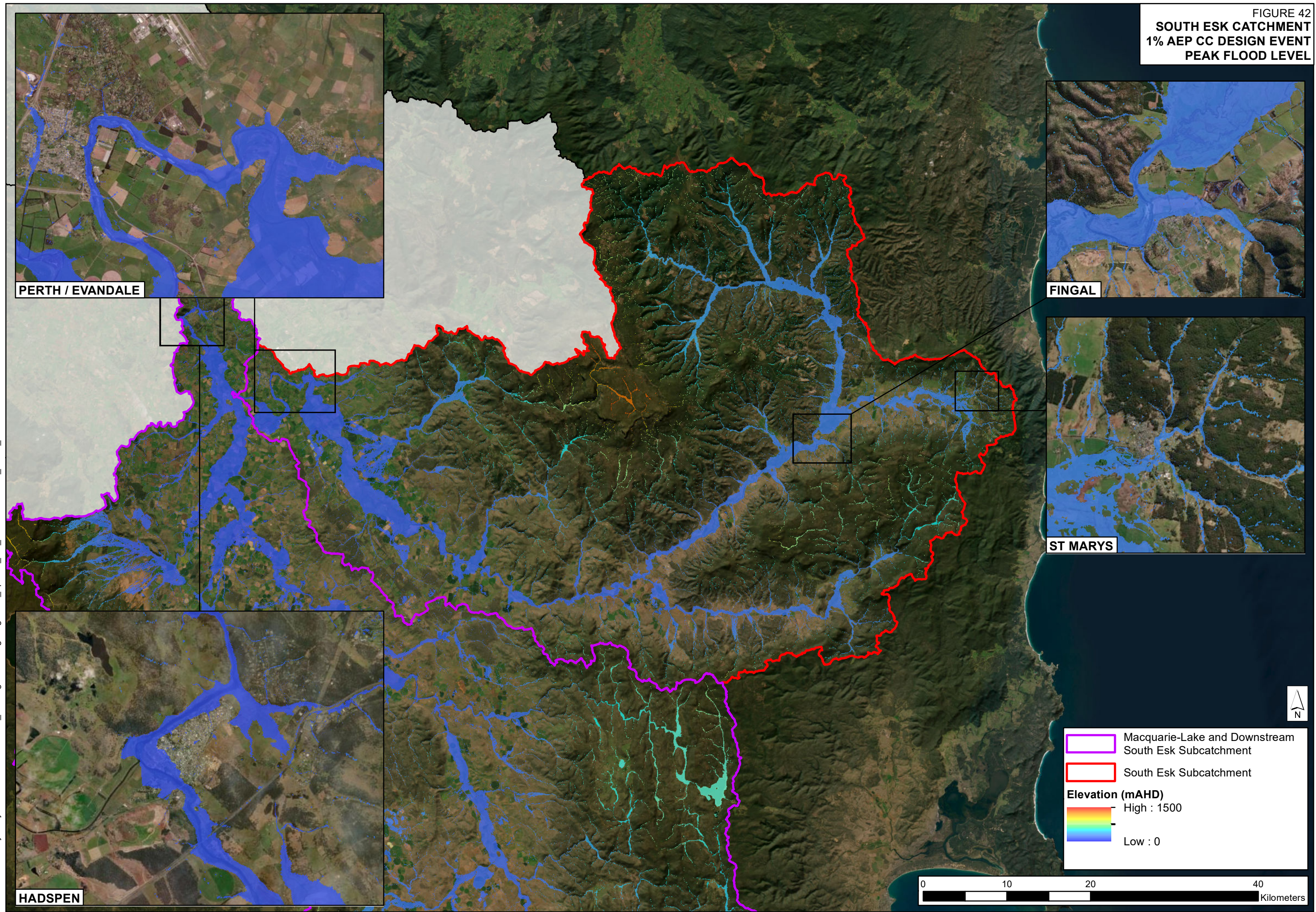




FIGURE 43  
NORTH ESK-TAMAR CATCHMENT  
1% AEP CC DESIGN EVENT  
PEAK FLOOD LEVEL

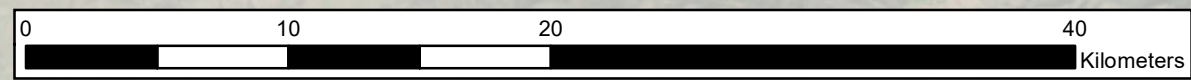
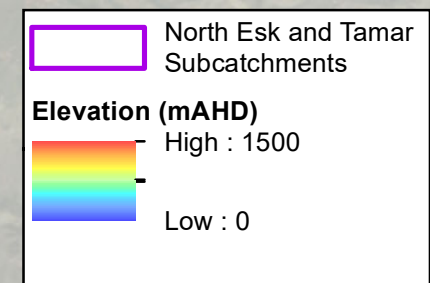
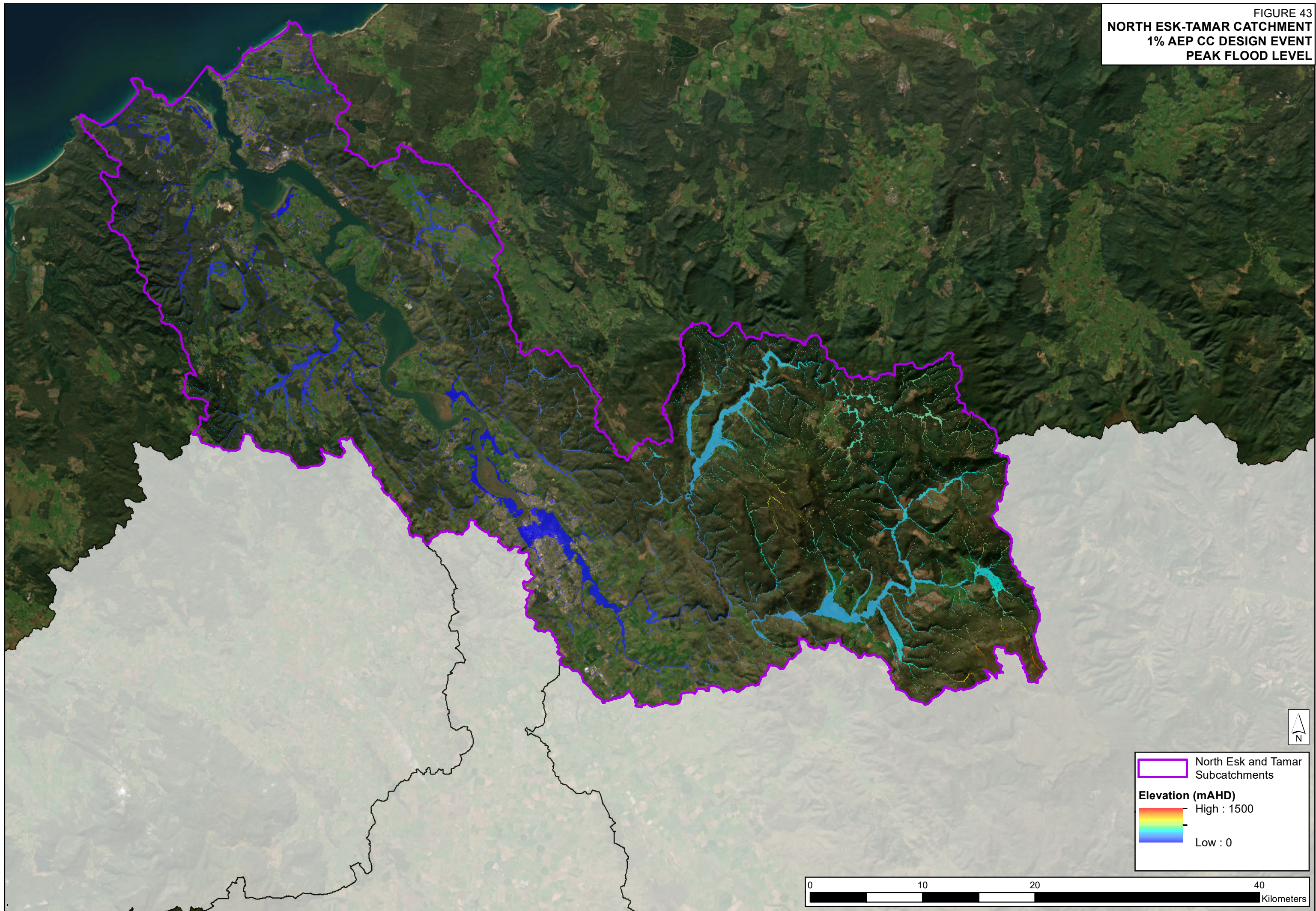




FIGURE 44  
MACQUARIE-LAKE CATCHMENT  
1% AEP CC DESIGN EVENT  
PEAK FLOOD DEPTH

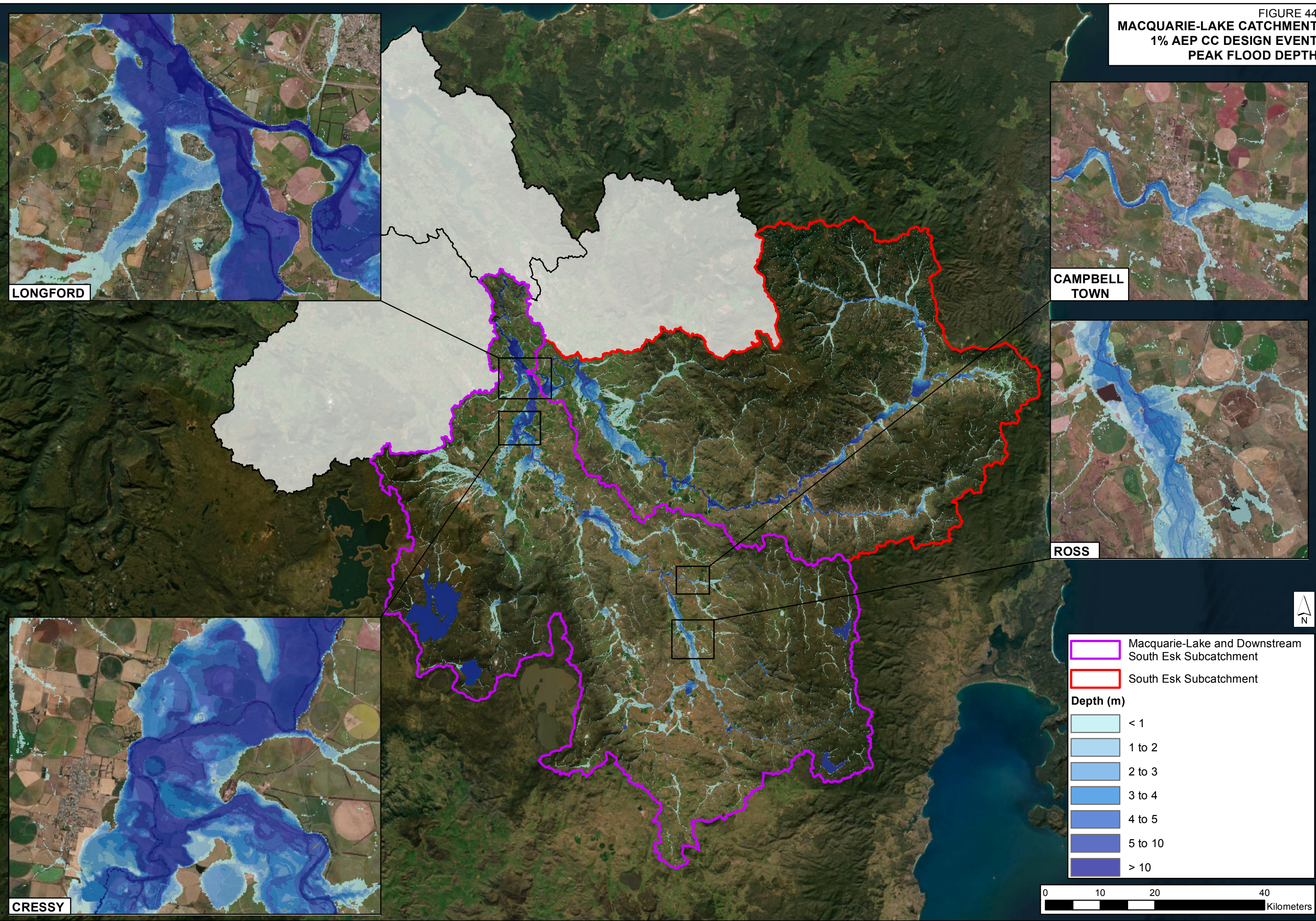




FIGURE 45  
MEANDER CATCHMENT  
1% AEP CC DESIGN EVENT  
PEAK FLOOD DEPTH

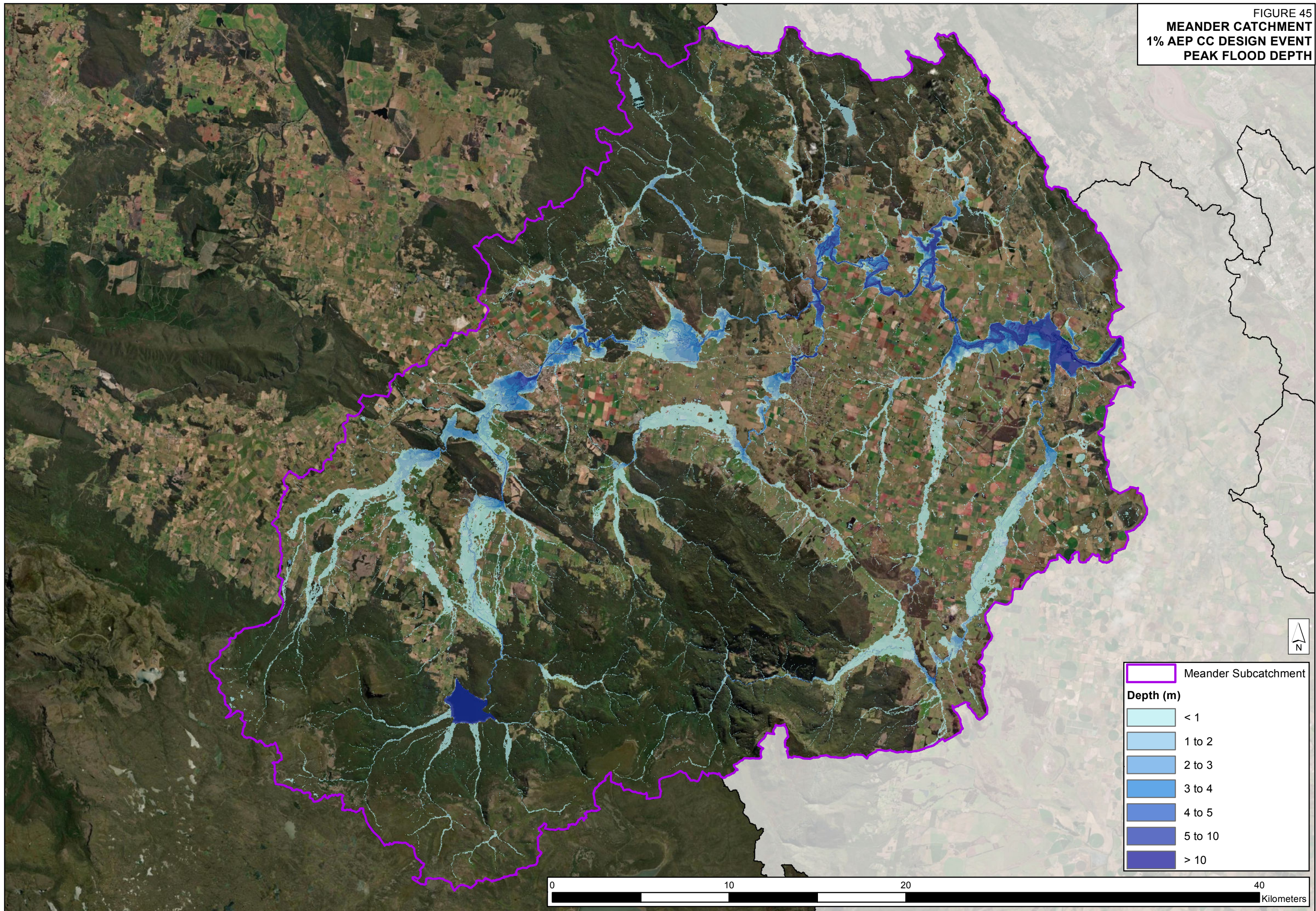




FIGURE 46  
SOUTH ESK CATCHMENT  
1% AEP CC DESIGN EVENT  
PEAK FLOOD DEPTH

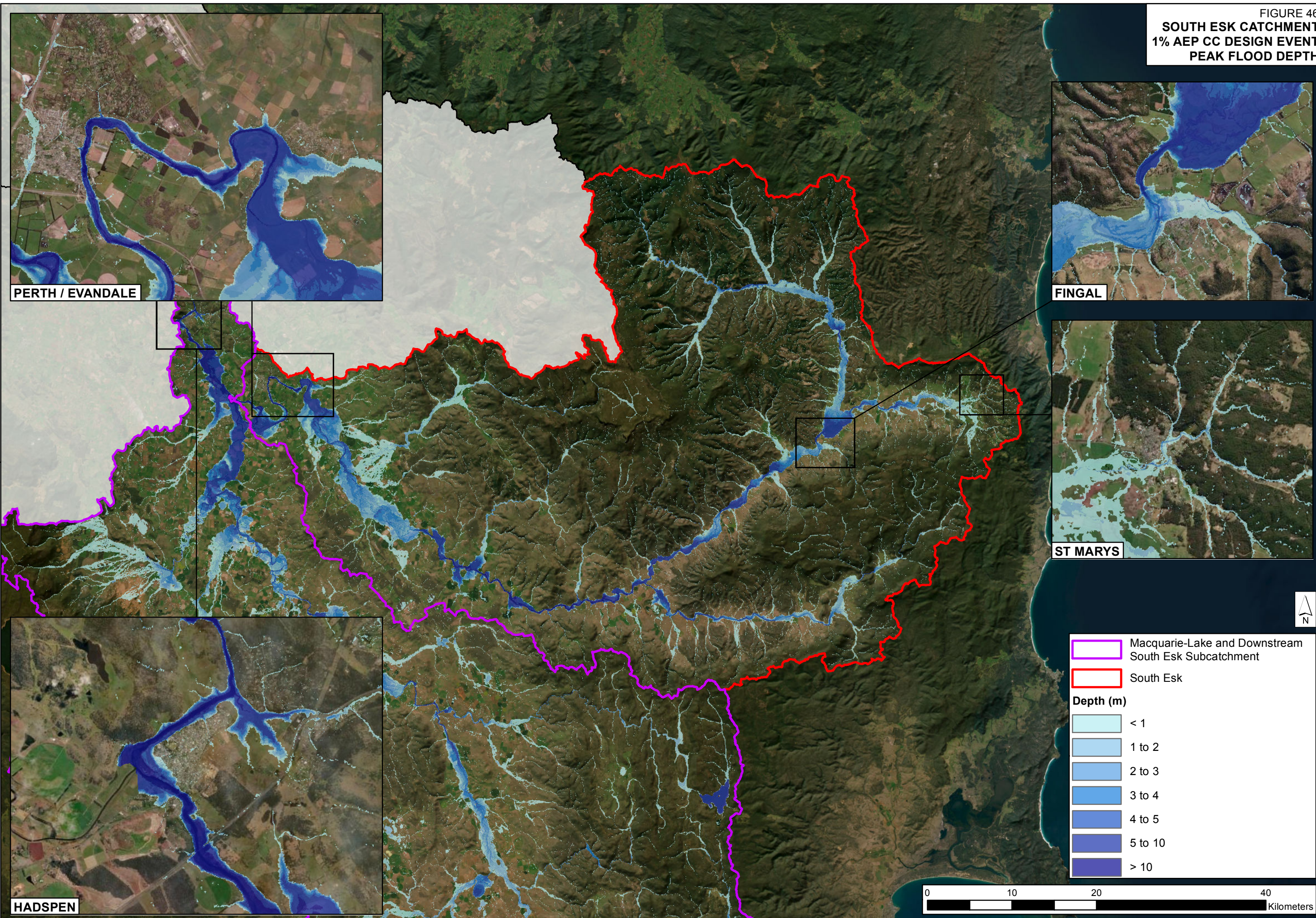




FIGURE 47  
NORTH ESK-TAMAR CATCHMENT  
1% AEP CC DESIGN EVENT  
PEAK FLOOD DEPTH

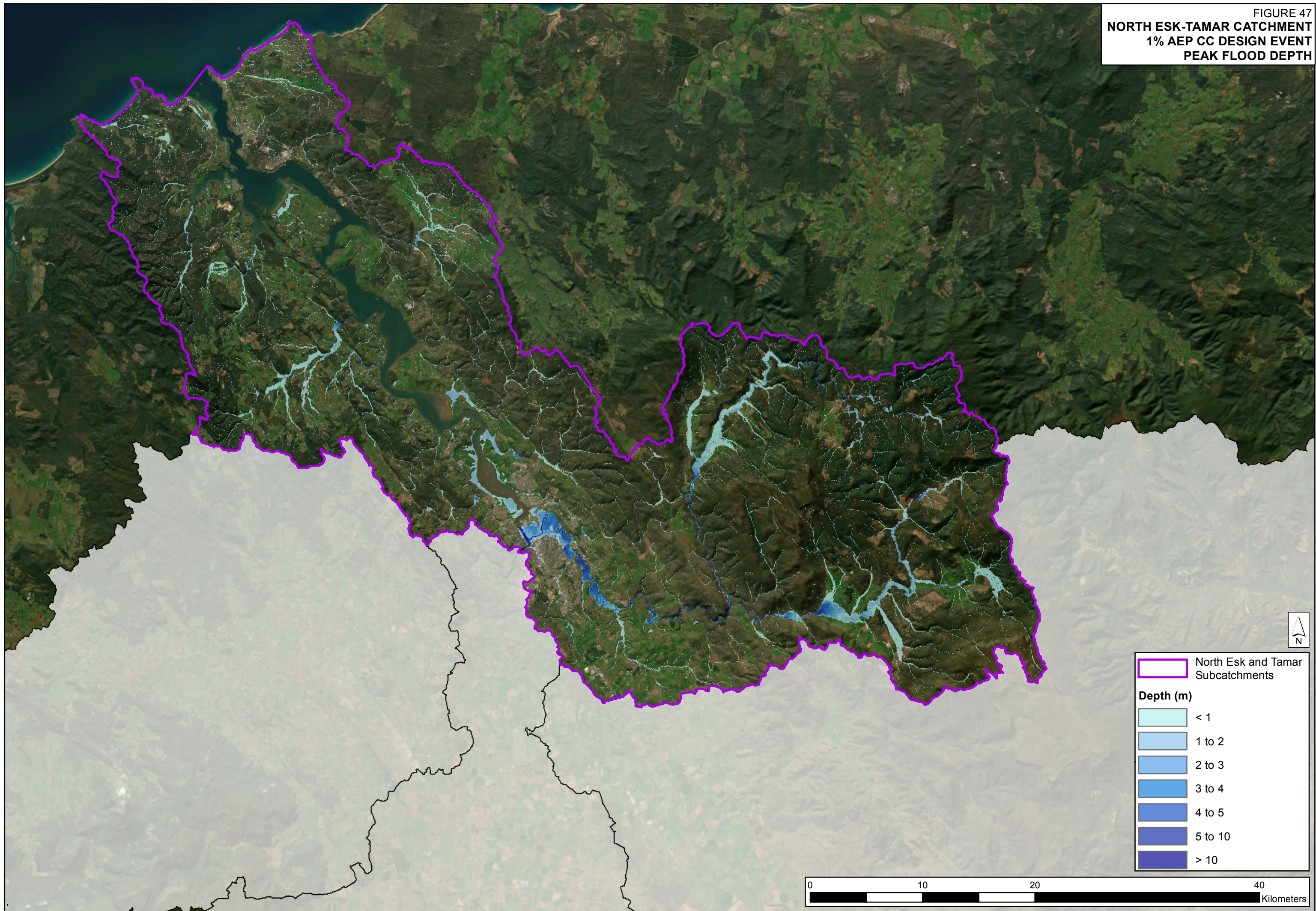




FIGURE 48  
MACQUARIE-LAKE CATCHMENT  
1% AEP CC DESIGN EVENT  
PEAK FLOOD VELOCITY

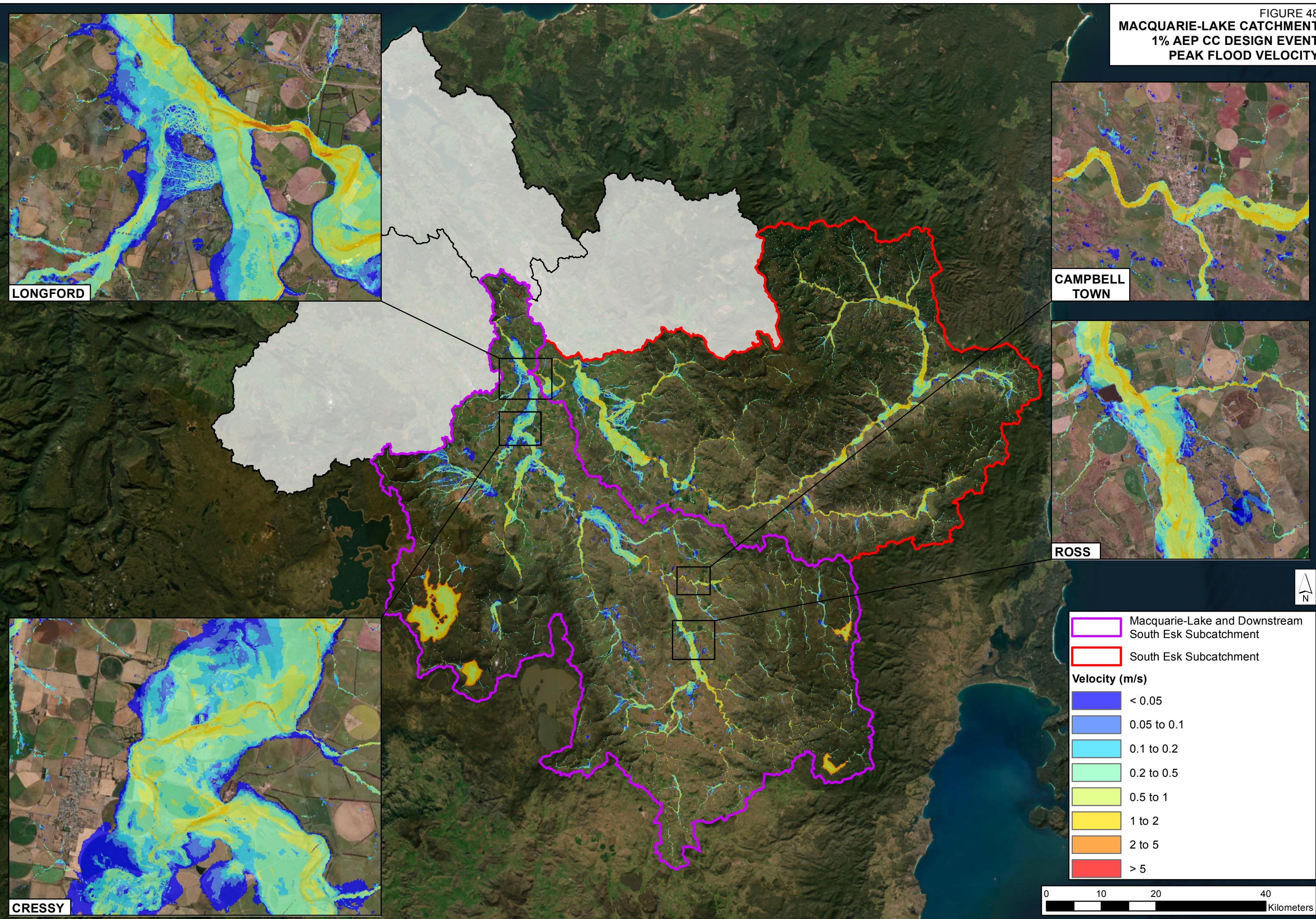




FIGURE 49  
MEANDER CATCHMENT  
1% AEP CC DESIGN EVENT  
PEAK FLOOD VELOCITY

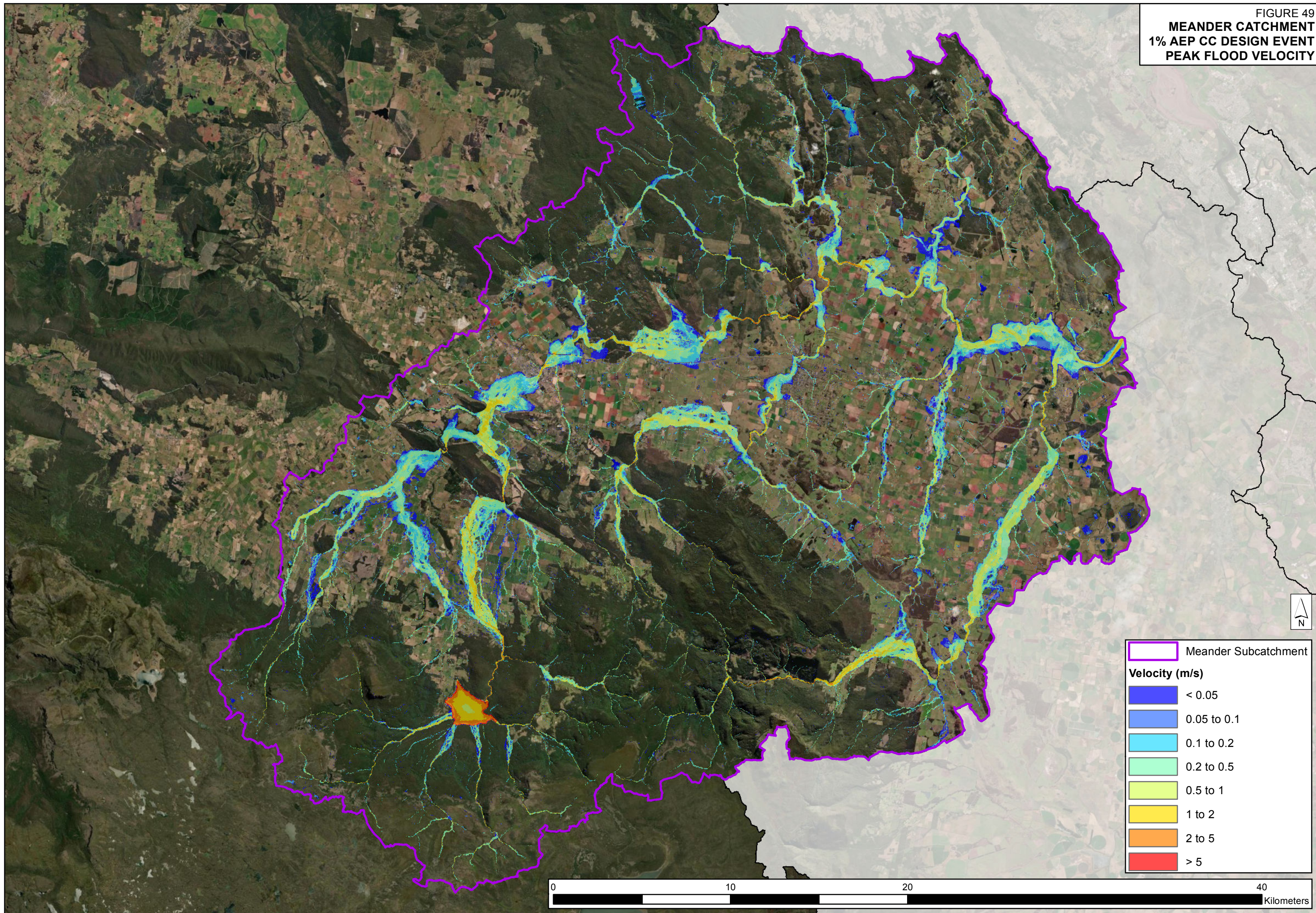




FIGURE 50  
SOUTH ESK CATCHMENT  
1% AEP CC DESIGN EVENT  
PEAK FLOOD VELOCITY

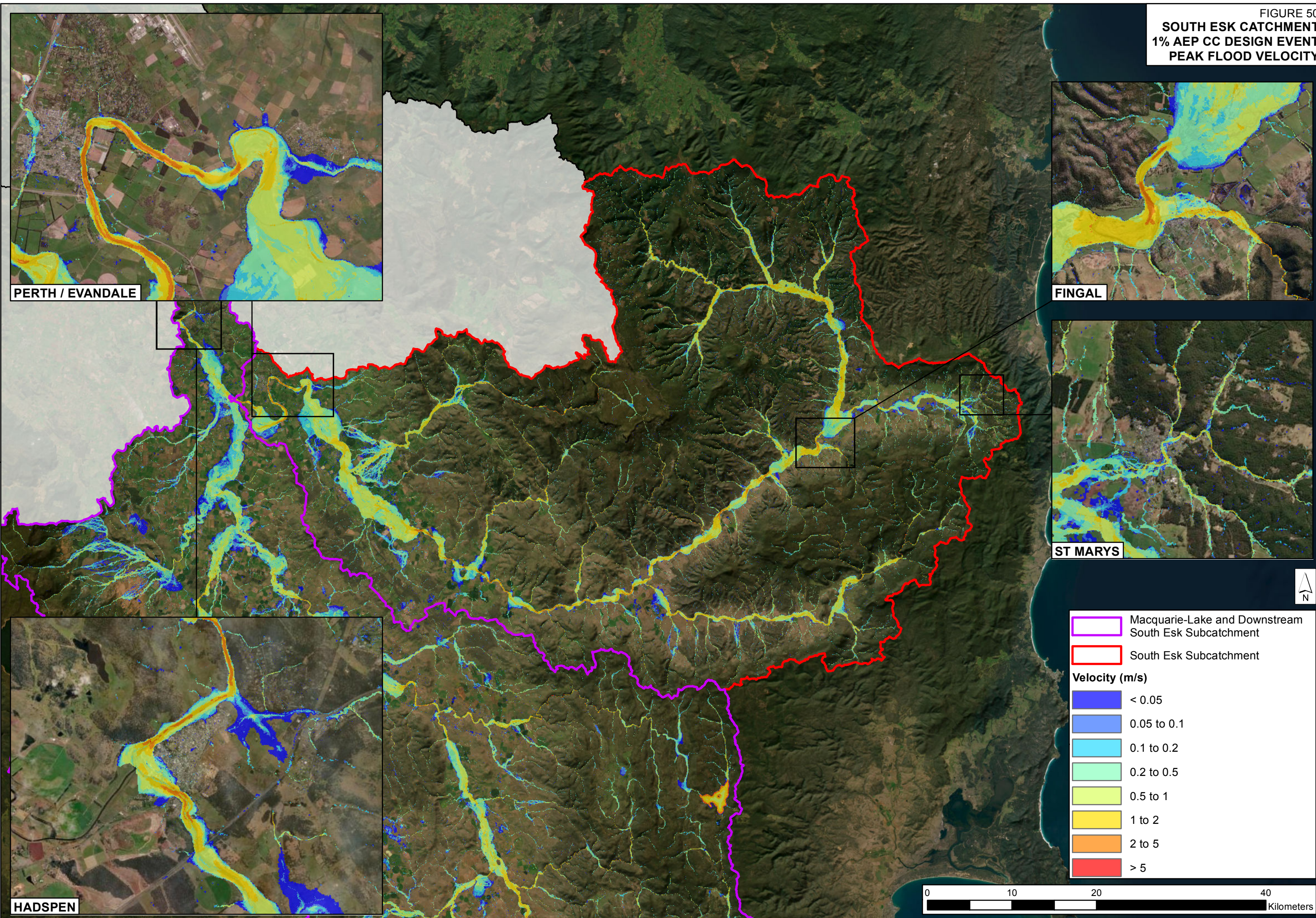




FIGURE 51  
NORTH ESK-TAMAR CATCHMENT  
1% AEP CC DESIGN EVENT  
PEAK FLOOD VELOCITY

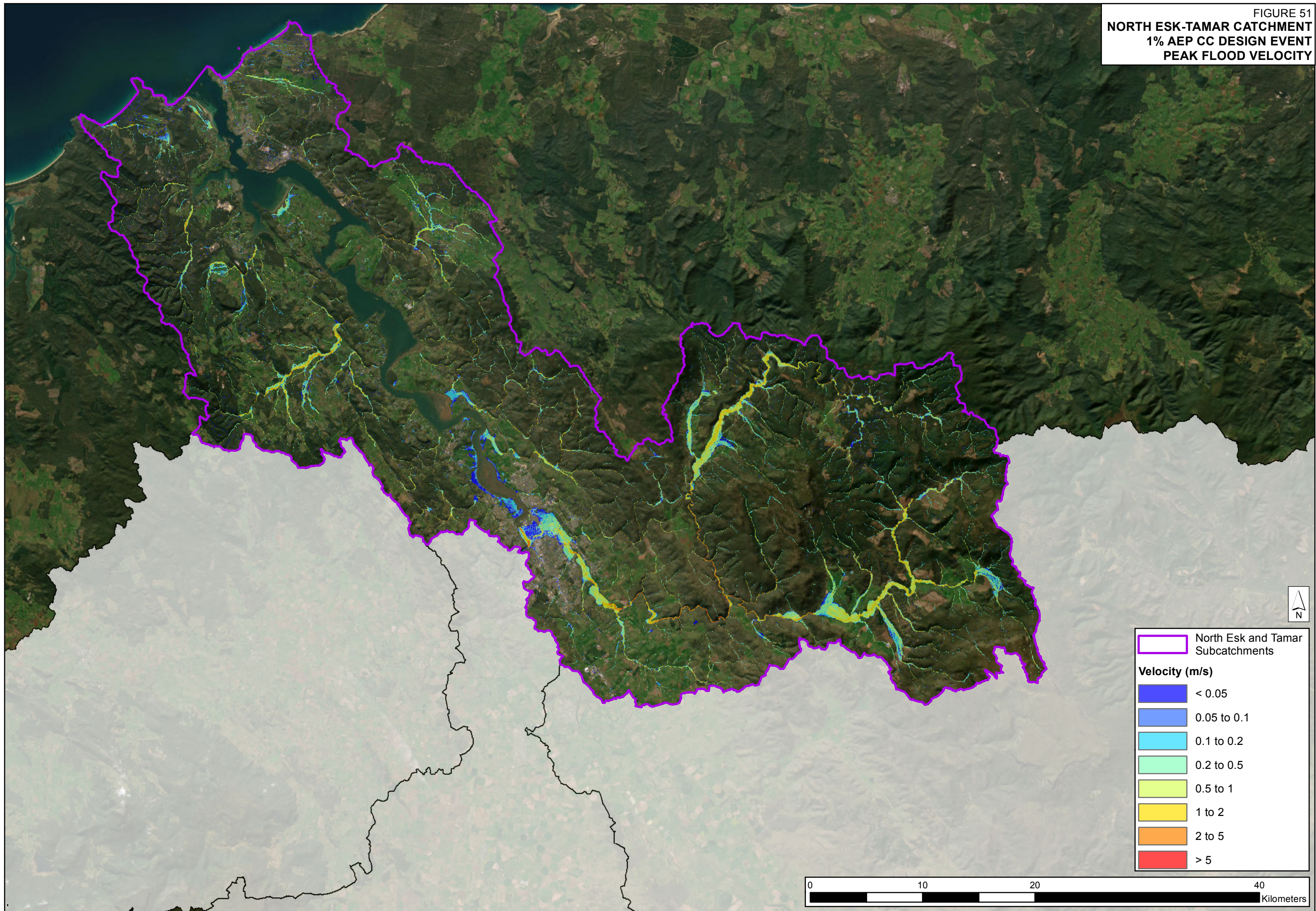




FIGURE 52  
MACQUARIE-LAKE CATCHMENT  
1% AEP CC DESIGN EVENT  
PEAK HYDRAULIC HAZARD

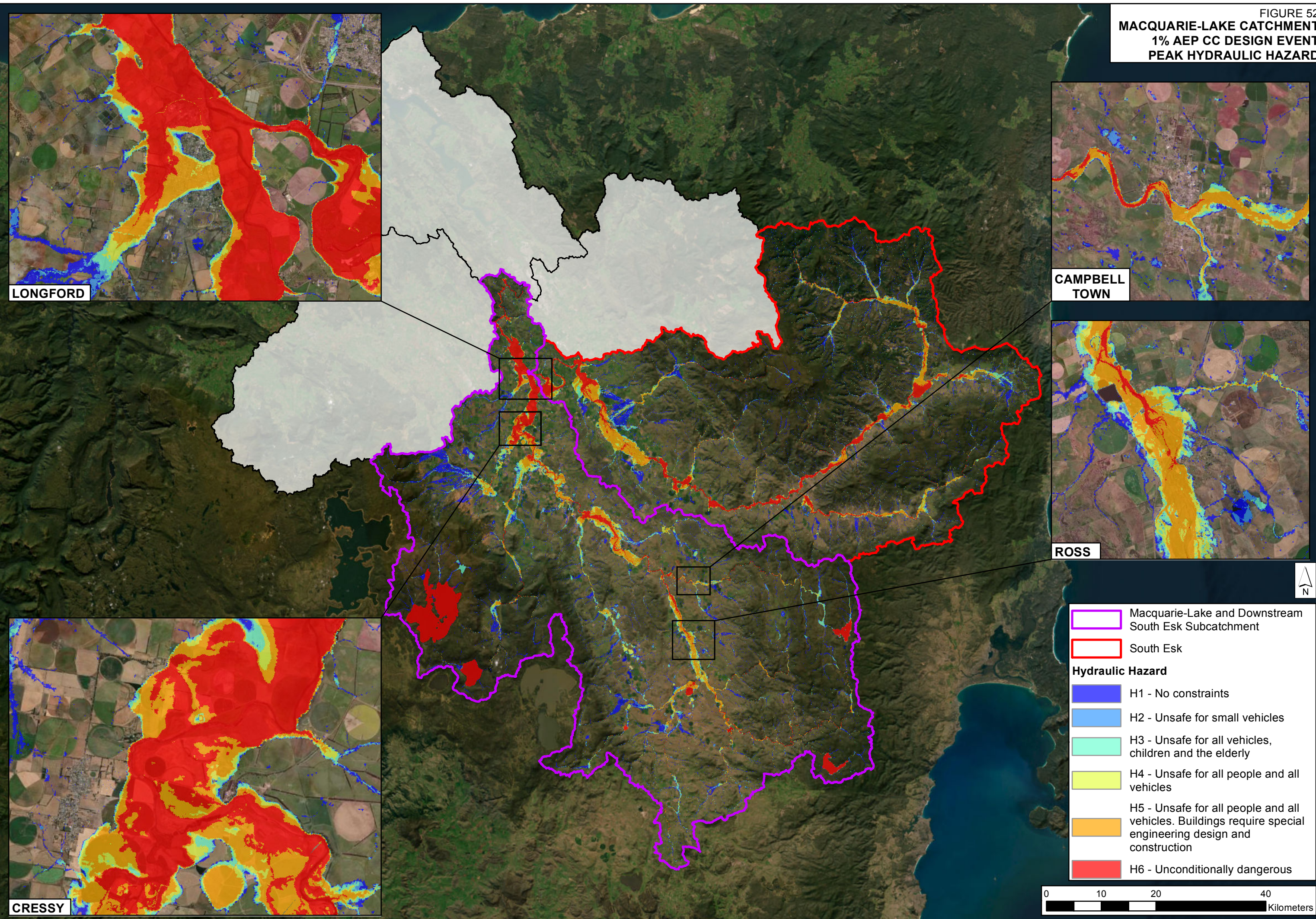




FIGURE 53  
MEANDER CATCHMENT  
1% AEP CC DESIGN EVENT  
PEAK HYDRAULIC HAZARD

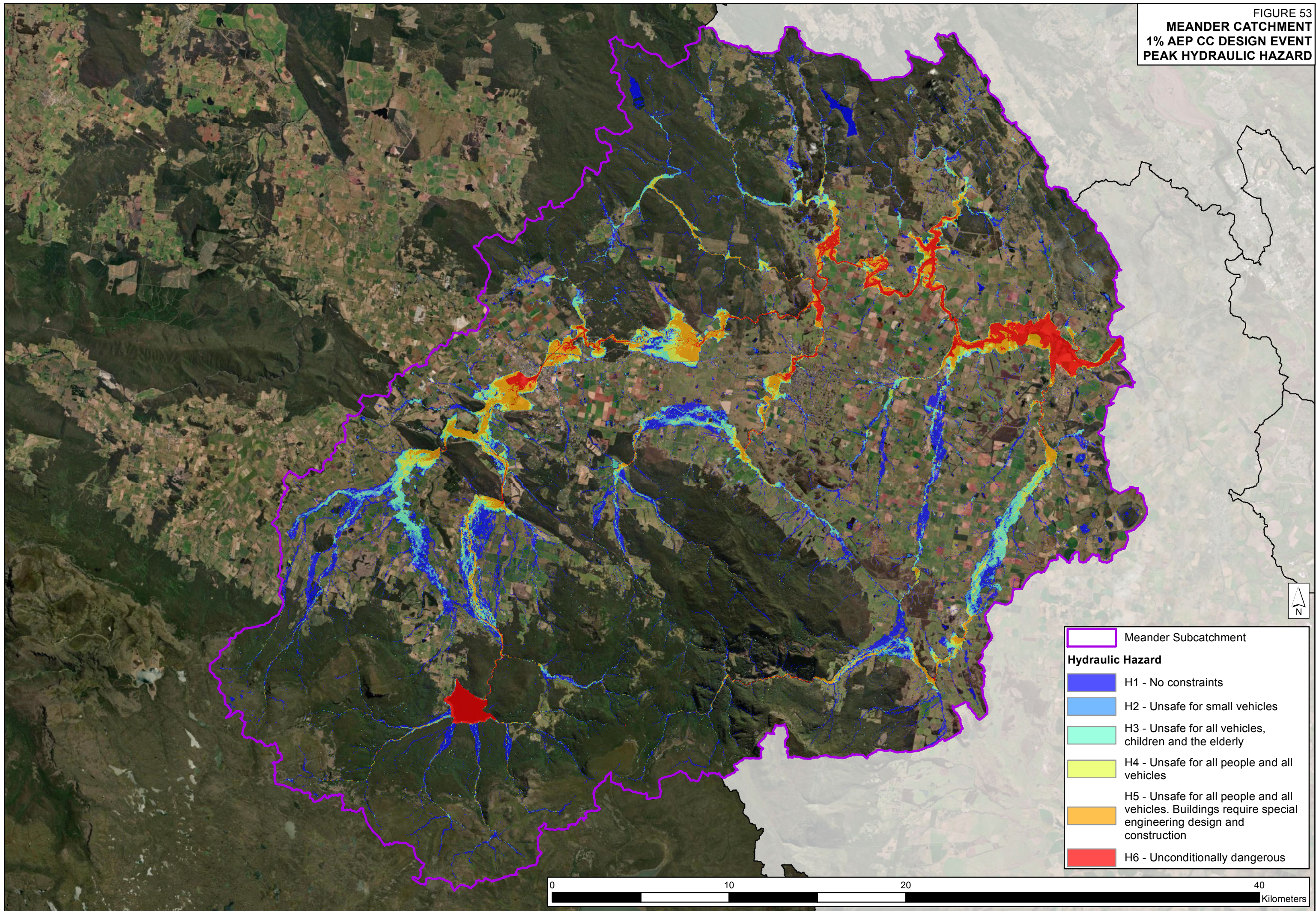




FIGURE 54  
SOUTH ESK CATCHMENT  
1% AEP CC DESIGN EVENT  
PEAK HYDRAULIC HAZARD

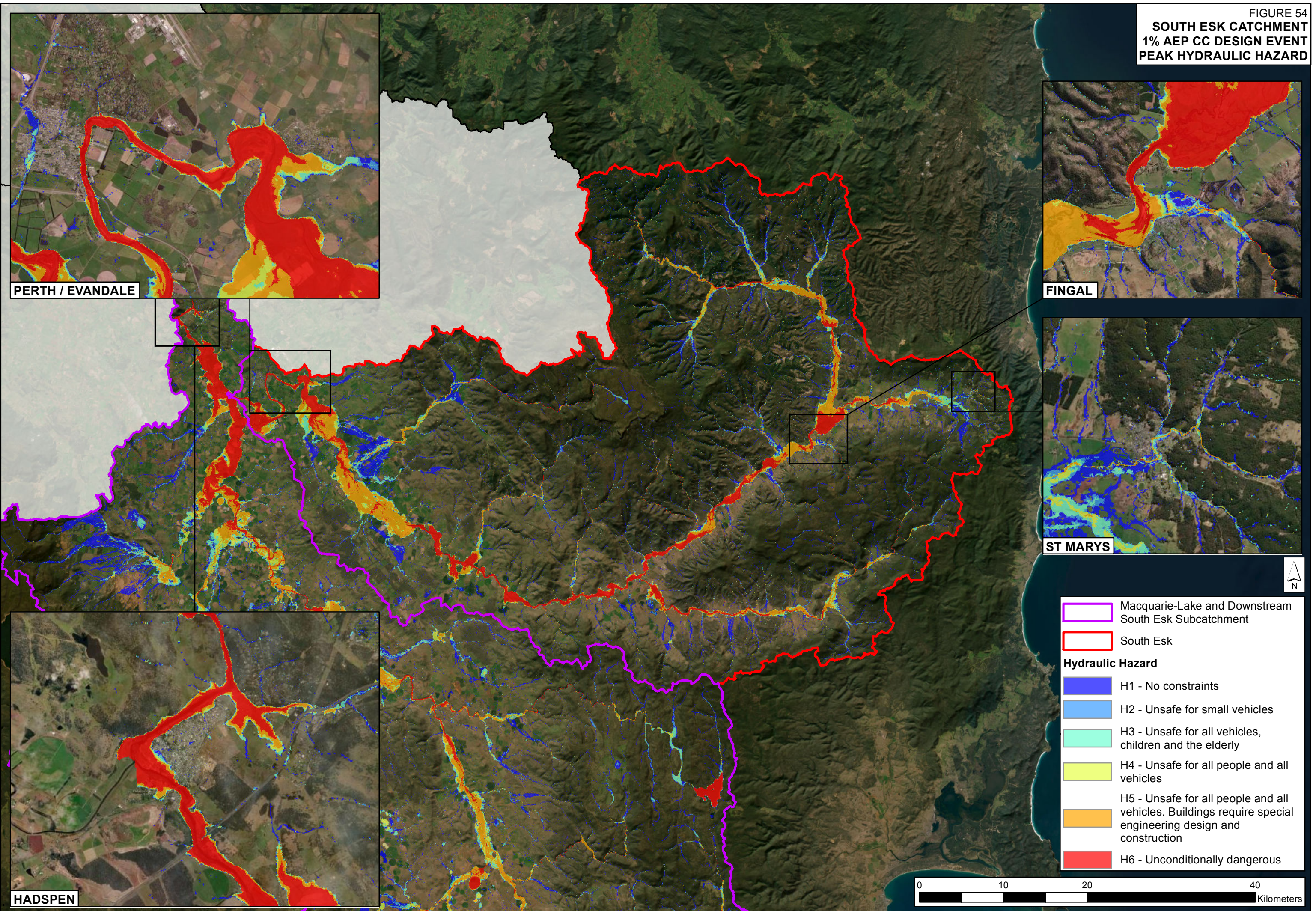
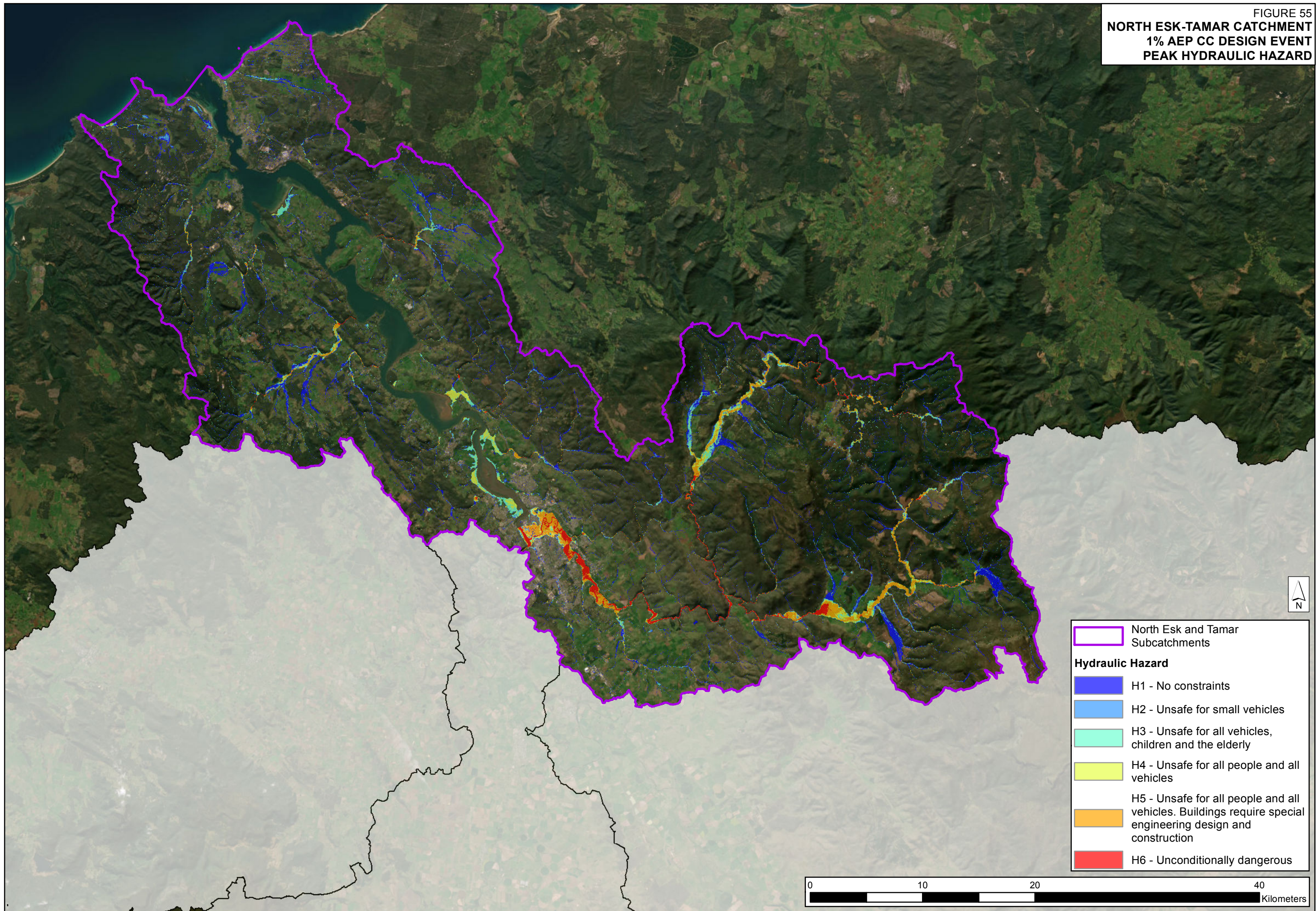




FIGURE 55  
NORTH ESK-TAMAR CATCHMENT  
1% AEP CC DESIGN EVENT  
PEAK HYDRAULIC HAZARD



0 10 20 40  
Kilometers



North Esk and Tamar Subcatchments

**Hydraulic Hazard**

- H1 - No constraints
- H2 - Unsafe for small vehicles
- H3 - Unsafe for all vehicles, children and the elderly
- H4 - Unsafe for all people and all vehicles
- H5 - Unsafe for all people and all vehicles. Buildings require special engineering design and construction
- H6 - Unconditionally dangerous